

Annual Report 2008 - 2009



Holdsworth Community Centre & Services
64 Holdsworth Street,
Woollahra NSW 2025
Phone: 02 9302 3600
email: info@holdsworth.org.au
www.holdsworth.org.au

Desktop publishing by Holdsworth Community Centre & Services
Printed by *Miroma Light Industries* www.miroma.org

Annual Report 2008 - 2009

Contents:

What we do	2
A new beginning	2
Acknowledgements	2
Joint Chairpersons' Report	3
Management Committee	4
Partnership Report: Woollahra Council	5
Our Supporters	6
Director's Report	7
Our Community	10
Disability & Carer Services	14
Community Transport	18
Services for Seniors	20
Organisational Chart	21
Financial Reports	
Holdsworth Street Community Centre Woollahra Inc.	23
Holdsworth Family Services Inc.	53

What we do

At the heart of everything we do at Holdsworth is enhancing life opportunities for our community. Our vision is to strengthen and support young families, promote the independence and social inclusion of children and adults living with disabilities, remove any barriers standing in the way of older people participating in community life and sustain those who are the carers for others.

We provide programs with purpose that change lives. We are a centre of community services information and we advocate on behalf of those who require our assistance. We create opportunities for volunteers to give back to their community and we aim to provide a professional and happy working environment for all of our staff.

Holdsworth is a valuable community resource for all the people of Woollahra and surrounding areas.

A new beginning

On 1 October 2008 Holdsworth St Community Centre Woollahra Inc was granted the taxation status of a Public Benevolent Institution (PBI), which allows our donors to claim tax deductions for their gifts and means that we are able to provide our permanent staff with salary packaging. Less than 3% of Australia's not-for-profit organisations have this status.

In order to achieve this, our members voted at last year's AGM to amend our constitution and we established a second incorporated association called Holdsworth Family Services Inc (HFS) to take on all the family services work previously managed by the other association. HFS is a tax-exempt charity, but does not have PBI status.

The two associations are managed in parallel, with separate chairpersons, but share common memberships. Together the two associations are referred to as Holdsworth Community Centre & Services and this is the Annual Report of both associations. The Financial Statements of both entities are published at the end of this report.

Acknowledgements

Our work would not be possible without the funding support and co-operation of many organisations. Our principal funders are:

- Woollahra Municipal Council
- Home and Community Care Program (joint federal and state program) (HACC) administered by NSW Department of Ageing, Disability and Home Care (DADHC) and NSW Transport & Infrastructure
- NSW Department of Community Services (DoCS)
- NSW Department of Health (SESIAHS)

Joint Chairpersons' Report

We are delighted to present this year's annual report. Holdsworth has continued to experience major growth in client demand and has responded with an expansion in services, delivered with the efficient allocation of all our resources.

Delivering outcomes

Our biggest strength this year has been maintaining our strong team of experienced staff combined with an increase in numbers of dedicated volunteers. With less than 10% staff turnover we have been able to devote our time to developing our programs and finding more and more ways to look after our clients. With our many new and on-going partnerships with other not-for-profits, local schools and businesses, we have been able to increase our level of service delivery well beyond the levels we have been contracted to provide by our funders. Wherever possible we have been using partnerships to lower our overall unit-costs in order to meet increased client demand.

We particularly want to commend the generosity of those who have been volunteering across all of our programs. Your help has meant that we have been able to include many more clients on each of our programs. Some of our programs are completely delivered by volunteers and many of the venues we use and resources supplied have been donated to us. This is truly what is meant by our vision of a community that sustains itself.

Our Partnerships

Our grant income was up 7.5% last year after securing some growth funding from Woollahra Council, the Home and Community Care Program and from NSW Health. Half of our income comes from state and federal government funding, with about a third from Woollahra Council and the rest from fees, donations and memberships. We greatly appreciate all of our funding partners, especially the close relationship we have with Council, with Mayor Andrew Petrie and Cr Peter Cavanagh serving as members of our Management Committee, along with the support we receive from Community Services Director, Kylie Walshe and her team.

Benevolent status

It has been our goal for a number of years to secure PBI taxation status for Holdsworth. We were able to achieve this in 2008 by the simple expedient of separating the work of our Family Services division (which doesn't qualify for the same taxation relief) into a new legal entity. This is a new beginning for Holdsworth because it has enabled us to establish our own charitable fund, the Holdsworth Care Fund. In our first year we more than doubled our income from donations and fundraising and are now focused on engagement with the corporate and private philanthropy sectors. The aim of the Care Fund is to finance all the little extra things that can make a huge difference in the resilience of families with caring responsibilities, such as emergency respite, counselling and allied health therapies and social participation opportunities.

Transition from Management Committee to Board

This year we have been reviewing Holdsworth's governance. What was once a very operational Management Committee is evolving to become a Board charged with securing the sustainable future of Holdsworth. We see Holdsworth as a very special place and want to make sure that we have the best structures in place to fulfil its potential in serving the needs of our community. We believe we have a good balance of experience and skill on our Board. We welcome new members, Fiona Place and Roberta Lauchlan, who joined us this year and we acknowledge the contribution of Yvonne Stewart who retired

from the committee at the last AGM, but continued to assist us with our Fundraising work. Our continuing members, Treasurer, Roanne McGinley Knox, Secretary, Robin Watts, Mark Jones, Keren Miller and Arahni Sont have all agreed to stay on the Board for the year ahead. We thank them all for their tireless efforts on behalf of the Centre.

2010

We have branded 2010 as the Holdsworth Year of Celebrating Diversity. Our aim is to extend further our message of social inclusion well beyond what we have already been doing by reaching out in friendship to other communities across Sydney to enhance and extend the experience and connectedness of our local community.. At the same time we want to make sure that all members of our local community feel very welcome at Holdsworth and we are hoping this very special year will reinforce this message. Stay tuned for updates on our website and in our newsletters.

Do enjoy reading the reports that follow from our management team. We hope that you feel as proud of our vibrant Holdsworth community as we do.

Claire Wivell Plater & Lyndell Droga



Management Committee

Committee Members during 2008-2009

Chairperson Holdsworth:	Claire Wivell Plater
Chairperson HFS:	Lyndell Droga
Treasurer:	Roanne McGinley Knox
Secretary:	Robyn Watts
Members:	Mark Jones
	Keren Miller
	Arahn Sont
	Yvonne Stewart (to September)
	Fiona Place (from September)
	Roberta Lauchlan (from November)
Woollahra Councillors:	Deputy Mayor Cr Isabelle Shapiro (to September)
	Cr David Shoebridge (to September)
	Mayor, Cr Andrew Petrie (from October)
	Cr Peter Cavanagh (from October)

Partnership Report



Partnership Report - Woollahra Municipal Council:

On behalf of Woollahra Council, I am very pleased to contribute to the Holdsworth Community Centre & Services Annual Report.

Council has an extraordinary relationship with Holdsworth Community Centre & Services, commencing nearly 40 years ago with the provision of a playground for children.

Council is proud to be a partner of the Centre, through the provision of direct funding for services for all members of the Woollahra community and Councils ongoing support to broaden the range of services on offer. I am delighted to see that the annual funding provided by Council to Holdsworth Community Centre & Services has provided a basis for the attraction of additional funds from other funding sources to provide much needed services.

Woollahra is an area with a growing number of young families and an increasingly ageing population, with Council relying on Holdsworth Community Centre & Services to provide appropriate services and support to these important groups. Council also commends the way that these services bring the community together, improving community spirit and well being for all.

The substantial increase in service provision in nearly all programs over the past two years is exceptional, and I would like to pass on my congratulations to the diligent Management Committee and committed staff and volunteers of Holdsworth Community Centre & Services. The entire Holdsworth team has worked tirelessly to strengthen the community spirit in Woollahra over the past year and improve the quality and quantity of programs on offer.

On a more personal note, Cr Peter Cavanagh and I have enjoyed the past year representing Council, meeting and being involved with this very motivated committee at the Centre.

Congratulations on the achievements of the past year and I look forward to the continued success of Holdsworth Community Centre & Services in the years to come.



Cr Andrew Petrie
MAYOR

Our Supporters

This year Holdsworth appointed our first Goodwill Ambassador Donna Hay, who is working with us in raising our profile with potential supporters. Donna was also a generous supporter at our February 2009 fundraising event.

donna hay



Holdsworth wishes to acknowledge and thank Westfield for its generous support and continued commitment to working in partnership to enhance the lives of children/young people with disabilities.

Holdsworth is pleased to have been appointed as a charity partner of Sydney United Football Club and, with its support has established a sports program for young people with disabilities.



In addition to many generous individual donors, Holdsworth receives support from many other organisations which assist us by providing goods and services directly to us or by donating items which we are able to use in our fundraising activities. In 2008-2009 these wonderful sponsors included:

Absolute Photography
Aeria Country Floors
Arabella Boutique
Arthur Murray Studios
Lachlan Astle Hair
Atlantis Hair
Australian Chamber Orchestra
Australian Vintage Ltd
Richard Banks Optometrist
The Bay Tree
Sally Beresford Antiques
B.Firm
Bistro Moncur
Bridge Climb Sydney
Buzy Bakehouse
Jules Collins Jewellery
Robyn Cosgrove Rugs
De Lorenzo
The DVD Gallery
Elixir Health Clinic
Jeff Einstein Jewellery
Enough Rope
Flat White Cafe
Fuss Salons
Gold's Gym
Gourmet Safaris

The Heartworks
Gloria Holland
The Hughenden Hotel
Huon Hooke
I See Kid Guide
Italex
JNP Studios
Jersey Road Veterinary Surgeons
Jo Malone
Jones the Grocer
Kickfit Personal Training
Kids First Aid
Körner Skincare
LatinCardio
Lesley Mckay's Bookshop
Luxe City Guides
Master and Miss
Miller & Harry
Nexia Court & Co
No Fear Fitness
Oscar & Friends
Parterre
PilatesPhysique
Queen St Pharmacy
RenaKan Cosmetics
Reads of Woollahra

Richard Martin Art
Sally McKay Photography
Sherman Contemporary Art
Foundation
Sydney Seaplanes
Tattersalls
Taronga Western Plains Zoo
SBS
Susan Holmwood Shirtmaker
Swiss-Grand
Sydney Philharmonia Choirs
Sydney Theatre Company

*(with apologies to anyone
we may have inadvertently
omitted)*

Director's Report

This is my third report as Director and it just keeps getting better. Who ever thought working in a community centre would be such fun? And I think the reason for this is that no matter what life throws at the members of the Holdsworth community, everyone seems to bounce back and just increase their determination to live full lives.

This was most evident to me at two forums we held during the year for Carers, attended by local MP, the Leader of the Opposition, Malcolm Turnbull. It was a great chance to inform the national debate on the needs of carers and their families. No matter what difficulties this feisty group of parents has faced, they never lose sight of the possibilities of the way things might be for their children or other family members. And neither does Holdsworth!

People

The reports that follow were compiled by our four managers and their teams. Ian Jankovic has recently completed five years as our Community Transport Manager. Stefanie Holt, Manager of Disability & Carer Services, and Maya Jankovic, Manager Aged Services have each been in their roles for over three years and Eric Scott, Manager Community Relations, is starting his third year at Holdsworth. The combined experience and dedication of this strong leadership team means that our programs have continued to evolve as we reach out more as part of the community, not just as dispassionate community workers. We work with whole families, not just 'clients', and get the greatest pleasure when we make things happen and see positive changes in people's lives as they connect with Holdsworth. I pay tribute to all four managers and to the fifty or so other staff they lead.

On the administration side I am greatly indebted to Cecilia Chong Wilson and her team for managing our accounting, administration, reception and premises maintenance. Cecilia is also responsible for establishing our very own choir, *Rhythm of Life*.

We said farewell to only three permanent staff during the year. We continue to work with Holly Catt, who is now at Woollahra Council, Sarah Sillar has come back to us as a volunteer one day a week and we are working with Wendy Imashev to develop holiday packages for carers.

Volunteering has taken off even more this year. Increased numbers have opened up so many more places for members of the community to participate in our programs. In particular the local schools all seem to be competing with each other to see which can send us more fabulous young people to work on both our disability and seniors' home visiting programs.

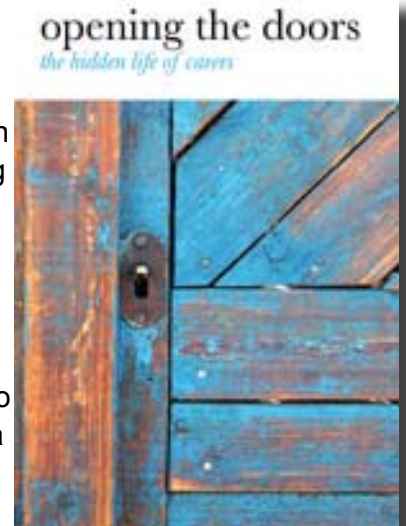
I am going to single out one of our volunteers, Robert Schneider, who has been extraordinary this year. After a long history of volunteering elsewhere Robert purpose built his new home in Vaucluse with sufficient space to run a day program for adults with disabilities, including a recreation room, art & craft space, and access to an outside area for exercise and gardening. He has recruited a whole team of other dedicated volunteers all of whom have been fully trained by Holdsworth. Now, every Monday, he and his co-volunteers run an entire Holdsworth respite program for seven lucky people for absolutely no cost. This shows how amazing volunteering can be.



Events

Publishing our first book was a big moment for the Centre. *Opening the doors, the hidden life of carers* was launched by Dorothy McRae-McMahon in October. Getting out the stories of about 20 of our carers was both validating and liberating. We hope to use this book to continue to raise awareness of the resilience of ordinary people who are called on to lead lives that are way out of the ordinary.

In February, thanks to the hard work of our retiring co-chairperson, Lyndell Droga, and a very keen group of other committee members, money started to pour into the Fund as a result of a gala cocktail party co-hosted by Woollahra Council at Redleaf. Thanks to our many donors, whom we acknowledge on an earlier page, including our first Ambassador, Donna Hay, and the many Friends of Holdsworth who gave so generously at the event and throughout the year. We are now using the proceeds from the Fund to support our work with carers and their families.



Other events during the year included our Art Exhibition in Paddington, Seniors Week Afternoon Tea in Vaucluse, Fun Days each term in Playgroup, and our Family Camp at Berry, which was funded through our partnership with Westfield.

Facilities

Thanks mostly to the financial support of Council we were able to upgrade our facilities somewhat this year, including a new downstairs kitchen, awnings, upgraded computer server, new chairs, curtains and window-sills in Library, two new murals, one additional vehicle and constant minor repairs to keep facilities safe and presentable.

Programs

From the reports and the financial accounts that follow I would like to highlight the following achievements from the last year:

We decided to strengthen our outreach and client intake programs to improve the ease with which older people in particular can access Holdsworth and to ensure that people who require other community services are appropriately referred on. This is generating many new contacts for us and, with the help of our volunteer team, we are helping more people to live independently. We assessed or re-assessed 387 senior clients during the year, compared to 160 the year before.

Playgroup has been growing consistently each year, with average daily attendance up 17% on last year, the same growth rate as the previous year. On our busiest day of the year we had over 90 families in the playground. Our baby days have been moved to our larger room on Thursdays to cope with the extra demand and many new activities have been introduced to keep all those small people fully engaged.

Activities for seniors have got a lot busier with over 19,000 hours of client services delivered. That translates to about 75 client contact hours per day, not including all the time spent in planning, managing and reviewing the programs. Every program that previously made do with our smaller buses now requires

our larger capacity buses.

There are also more healthy ageing programs, including yoga and our Heartmoves, low cardio workout program. Even the movies have got a lot more glamorous with regular red-carpet events.

At the end of the year we purchased a new 9 seater vehicle, bringing our fleet up to four cars and five buses. We have been piloting a shuttle-bus program across the whole municipality which we are continuing to fine tune to match the needs of those requiring better access to transport. This will take some of the pressure off our individual transport services which have been running at capacity for the last two years, with a smaller increase this year. Our number of bus passenger trips, on the other hand, was up 28% on the previous year.

In the Disability area we were already at full capacity for our funded programs, but managed to grow our service delivery through our partnerships. We added another day and some more clients to our afterschool program, Funsworth, which we “code-share” with Eastern Respite & Recreation thanks to the increase in our school-volunteers program, which makes the whole experience more inclusive. Many local families also bring their young children to play while Funsworth is on which creates a very positive vibe here each afternoon.

Funky Sundays is a monthly dance program hosted by Waverley College and shared with Junction House. Everyone is looking forward to the ball at the end of this year. The Department of Sport & Recreation gave us a grant to run a trampolining program each Saturday. A charity partnership with Sydney United Football Club more than doubled our funding for this program which commenced in July.

We created one new independence program for young adults, splitting our much larger adults Saturday Gang program. We are also looking at creative ways of transitioning clients from our older teenage groups to the young adults’ program as they go through the critical phase between school and work.

We continue to build our work with Carers including opening our first Men’s Group, running a number of workshops on safety, legal issues, sexuality and disability, and facilitating direct access to the political debate as mentioned above. We also found time to do plenty of celebrating of the work of our carers.



Our commitment to you

Every day our team becomes more creative in thinking about better ways of doing things, increasing our skill levels and delivering more positive experiences for our community. We want to hear more from all our clients and members so that we know we are on the right track and are giving you what you need and want. If we get it wrong, tell us so we can learn from our mistakes. If you like what we do, tell someone else ●

Michael Ryan.

Our Community

This was a year of much activity, some change and some consolidation for the Community Relations Team.

Jonathan Rhodes took over as Volunteer Co-ordinator from Holly Brown who moved on to work with Woollahra Council. Jonathan's role is expanded to include Community Outreach which will complement the work in seeking and placing volunteers.

Client Intake and Assessment moved into Community Relations with Kathleen Hanstein joining the team. The role of intake was seen as linked to both the outreach work, with and to the community, and the process of placing volunteers.

There are now 780 members of the incorporated Associations

Engagement with the Community

Apart from the wide range of Holdsworth services to specific target groups, we aim to be part of the local community and have had a number of key activities in the year:

- Participation in the Woollahra Carol Evening in Chiswick Gardens
- Participation in the Holdsworth Street party held at the centre
- Partnership with Woollahra Council to make Parenting (PROP) sessions available to the community on Sundays at the Centre
- Partnership with Woollahra Council to have Holdsworth become a showcase water saving site with rainwater tanks and gardens. This involves information nights at the Centre
- Discussions with Paddington Uniting Church about common interests
- Our Art Exhibition at Paddington Uniting Church
- Launch of our book of carers stories – *Opening the Doors*
- Volunteer Information Night
- Presentation to schools and TAFEs
- Display in the Centre of works by local artist Molly Keneally
- Annual Fundraising Cocktail party hosted with Woollahra Council at Readleaf
- Launch of Woollahra Link our Free Community Bus
- Fun Days each term as part of Playgroup with entertainment from indigenous and multicultural performers
- Participation in the Woollahra Council Access Committee, Eastern Area Interagency and the new Child and Family Interagency.

Media

We took regular advertising spots in Village Voice (no longer published), Wentworth Courier, Sydney's Child and Aussie Kids to promote our services and/or seek volunteers.

News coverage of events and activities at Holdsworth was achieved for

- Our new Mural (Village Voice and Wentworth Courier)
- School volunteers (Wentworth Courier)
- The water-wise initiative (Wentworth Courier)
- Book of carers stores – *Opening the Doors* (Wentworth Courier; NCOSS News; South Sydney Herald; Carers NSW and Accessibility websites)
- Caring for Carers (Newsletter of Eastern Sydney Division of General Practice)
- Playgroup and Triple P (Aussie Kids)

- Art Exhibition (Wentworth Courier)
- Community Bus (Wentworth Courier)
- Volunteer Information Night (Wentworth Courier)

Venue Hire

The Centre continues to be hired out for nearly all the available spots with only a few weekday evenings not used. There were 125 parties at the Centre in the year (a slight increase on last year) and 115 evening and weekend hires (a slight decrease on last year) for everything from choirs to Body Corporate meetings. This is in addition to the approximately 120 hires for the *Shake Wiggle & Roll* music classes which operate during Playgroup with the room hired by the presenter.

Families

Strong attendance continues with a daily average for the year of 55 families per day, a 17% increase on the previous year. The increase in the cost differential between casual and member rates has clearly encouraged a strong take-up of memberships.

We get good feedback from parents, and both Sports Fundamentals and Story time are very popular. Jamie from Sports Fundamentals shows great skills in engaging the children and Woollahra Library has excellent staff who incorporate puppets and nursery rhymes.



The new awning has added an undercover area for shade and rain protection and the Umbrella (recently stolen, but soon to be replaced) has been fantastic for wind protection for Playgroup staff.

Playgroup Attendance							
Period	Active days	Rained out	Members	Casuals	First Time	Total	Daily Average
05/06	180	24	3,949	2,988	769	7,,706	43
06/07	179	22	3,236	3,273	689	7,198	40
07/08	176	28	3,586	3,827	806	8,219	47
08/09	183	18	5,278	3,828	987	10,093	55
Change in key figures 2008/2009 compared to 2007/2008			47.2%	No change	22.4%	22.6%	17%

Playgroup Plus continues but with a very low attendance. This is not a great problem as it does not involve additional staff time and the families who do come can participate in the regular Playgroup.

There have been a number of Playgroup *Fun Days* featuring:

- Indigenous dancers and performers
- Gourmet BBQ – Robert Lees playgroup father procured fine quality meat from his employer at Buon Ricordo
- Baby Festival Fun Day
- Jumping castle
- African dancer
- Massage therapist
- Lucky draw
- Stalls
- NAIDOC & Sorry Day celebration (Aged services clients joined us for performances)
- Wildlife and Reptile display.



Baby Days

The number of parents coming to Baby Days continues to increase, with a number of mothers now coming on Tuesday. We are continuing with nursery rhymes due to its popularity

The range of 'guest speakers' has included a dietician, belly dancer, local pharmacist, chiropractor, yoga for mums & bubs, sign language for babies & baby massage. A trial of an afternoon "Baby Playgroup" was held at Rose Bay Cottage in Term 2 with limited success. Those who attended expressed a preference to come to the morning Playgroup at the centre.

Playgroup Volunteers

There has been an outstanding contribution by volunteers to Playgroup. Our volunteers have come from culturally diverse backgrounds and each brings their own skill and style. Volunteers have flourished in, and contributed to, different areas like craft, baby days assistant, registration and general supervision.

Volunteer Services

Volunteers have continued to play an important part on the Holdsworth programs. The numbers of volunteers has increased over the year responding to all the new initiatives that have taken place.

At the end of June 2009, there were 84 volunteers (up from 70) covering 96 sessions. This corresponds to 8.30 Full Time Equivalents and continues the increase in numbers that was achieved last year.

Working with schools

The link with schools has blossomed over the year. There are now 26 students volunteering. The majority work in the disability programs and come from Sydney Grammar, SCEGGS and Cranbrook schools. The support from these teenagers and their schools has enabled more children with disabilities to be included in the Funsworth program.

The Bowling program and Funky Sundays would not be as successful without the support of pupils and teachers from Waverley College. Additionally, eight students from Ascham have been visiting Community Links clients. They will be replaced by eight more in the next term. The positive reaction from clients is a testament to the girls' enthusiasm and maturity.

The close relationship between Holdsworth and the teachers at Sydney Grammar and Ascham has led to a new initiative for the next year. Pupils will be interviewing older clients with the aim of writing up life stories for a book that Holdsworth hopes to publish in 2010. Not only will this be a record of the fascinating lives

that people have had, but also enables the younger people to interact with those of more advanced years.

Source of volunteers

In May 2009, Holdsworth held an Information Evening for prospective volunteers. An advertisement in the Wentworth Courier and leafleting, brought thirteen people to the evening. Five have already started as volunteers, with two more commencing soon.

Otherwise, potential volunteers come from a variety of sources ranging from the Holdsworth website to the Centre for Volunteering, existing clients to clients' family members. However, the most interest received is from friends, families and other contacts of existing volunteers and staff.



Supporting volunteers

Volunteers are offered training, some in-house and some organised by the Volunteer and Service Training Centre (VAST) and our Volunteer Coordinator ensures contact with all volunteers on a regular basis. However, the key support on a daily basis is provided by Team Leaders and Program Managers.

Succession

It is important to continue recruiting and supporting volunteers. As well as people volunteering for a variety of reasons, volunteers also leave for a variety of reasons. Volunteers, in particular those who are retired, take long holidays. There is also a need to respond to new and changing programs to ensure Holdsworth staff receive the support required to run their activities successfully. Therefore, there will be a continuing focus on recruitment using a range of methods.

Client Intake and Assessment

Client Intake and Assessment is now a full-time role which has allowed considerable progress on dealing with backlogs and re-assessments. There was an increase in reassessment of current clients to ensure:

- up to date knowledge of all current Holdsworth services;
- maximum usage of services by current clients, especially those who haven't used the service for more than three months;
- correct and up to date records of client information; and,
- efficient use of the filing system.

In addition to clients for our Aged Services and Community Transport, clients have been referred internally to Carer Support services, Community Links and externally to Waverley Seniors, Randwick Community Transport, Jewish Centre On Ageing, Waverley ACAT, South Sydney Transport, Eastern Suburbs memory loss groups, Catholic Healthcare, the Guardianship Tribunal, Homecare (personal care or cleaning), Veterans' Affairs and Meals-On-Wheels.

Work has commenced to improve our responsiveness to cultural diversity and the numbers of clients accessing Carer Support Services. eg:

- new contacts established with indigenous groups within the five LGAs covered by Carer Support Services;
- attendance at an indigenous 'Fun Day' on 14th July to promote Carer Support; and,
- attendance at interagency meetings with Randwick City Council.

During the year we assessed 259 potential new clients and 160 were re-assessed ●

Disability & Carer Services

Both Disability Services and Carer Services have been committed over the last year to deliver programs with purpose. We introduced new programs in both areas as well as constantly improving our existing ones to ensure we can make qualitative improvements in the lives of our clients.

Holdsworth Disability Services provides social support services for children and adults with mild to moderate intellectual disabilities and low to medium support needs. We cater for families in our 5 local government areas. Our client base is spread over a wide area and is very diverse in age, needs, disability, cultural background and status.

Holdsworth Carer Services is currently running five support groups for carers – *Chinese Carers Group, Men at Work, Carers and Beyond, Creative Carers* and *East Enders*. These groups are established and ongoing with a core attendance group and ongoing promotion to build and reach more carers in those categories to attend. The groups are also organic in their content and timing – our aim is to listen and understand what the carers need and want and to act upon that.

We are unique in our approach to working with the family as a whole and we offer services for carers and their children under one roof and we aim to support our clients throughout their whole life span. We have a very close relationship/partnership with other disability services in the Eastern Sydney area which offer Social Support Services (Eastern Respite & Recreation (ERR) and Junction House).

Disability Services is currently providing services to 58 adults and 59 children and Carer Services delivered direct services to 141 carers during the year

Disability reported 14,303 Social Support Hours to DADHC in 08/09 and Carer Services reported 1,936 counselling/support/advocacy/information/support hours to DADHC in 08/09. This was sufficient to meet our contracted obligations, but in reality understates the total number of hours of service provided to clients as a number of our newer programs are not funded by DADHC.

New Programs

New programs and support groups have come about through identification of assets or gaps in the community and are outlined below.

Funky Sunday Dance program

This is a 2 hour monthly Dance program which provides a chance to socialise with friends, learn groovy dance moves and get fit whilst having fun. The program is an innovative three way partnership between Holdsworth, Junction House, and Waverley College and is aimed at young adults with mild to moderate support needs.



There are different music/dance themes each Sunday and a volunteer teaches the participants a few simple steps to introduce a variety of music and dance styles. There is also free dance to their favourite music.

“My daughter enjoyed the dance program so much that when she got home she slept for 2 hours straight. Fantastic thank you so much”

Robert's Monday respite

Robert's program offers activities for young adults on Mondays from 9am – 3pm during school terms in Vacluse. The program is run by volunteers and is available to Holdsworth clients free of charge. We currently have 7 clients accessing this service who enjoy the activities immensely and are really benefiting from working with the volunteers. HCCS staff regularly drop in to monitor and support the volunteers.

Family Camp

Our second family camp in Berry was held on the 22nd -24th May when families went away for a long weekend. The funds came partially from the very kind Westfield Community donation and our Care Fund.

"An extremely belated, but heartfelt THANK YOU from my son and myself to you and all the staff who contributed to our wonderful weekend away at Berry. I know it was hard work for you all, but I'm sure all the parents (and kids) really appreciated all the effort that was put into all the varied activities and ensuring everything went smoothly. And though my son didn't join in the scary ropes, giant swing and such he did have a good time and did enjoy the canoeing. I also loved the canoeing as well as walking into Berry and the afternoon at the winery – that was magic!"

Sexual Health

In partnership with ERR we offered six one hour workshops for our teenage clients as well as having one pre- and one post workshop for parents. The workshops have been a big success and the evaluation and discussions with parents indicated that there is a huge need for sexual education within the disability sector. A sexual health folder with all the collected information was created. Our strategic plan for 09/10 reflects this.

*"A really important topic. It is great to have a workshop like this for our children with a disability."
"I would like to have more workshops that cover more topics around sexual behaviour to help me cope as a parent."*

We held two workshops on Sexuality and Disability for carers. Both workshops explored ways for carers to talk to their children with intellectual disabilities about sex and sexuality. Our discussion looked at values, managing anxiety, and hopes and fears and were run by guest speakers from Family Planning and Relationships Australia.

Art Exhibition

A very successful Art exhibition was held at Paddington Uniting Church on the 30th October – 1st November. 55 artworks were sold and \$2000 was shared between the artists. Another exhibition will be held at Holdsworth in November.

Adventure Club

This new program was launched in October 2008. This is a program for young adults between 18 and 25 years. Nick Cassim leads this group which is very focused on learning independent skills.

The Carers and Beyond group

This group has been re-established and is thriving – the group focuses on carers of adult children with a disability (18+) and meets fortnightly at Holdsworth – two times are set – 4.30 and 7.30pm to be able to offer working carers the option to attend.

The focal point of this group is peer support, information of a practical nature (i.e. housing and work options, including guest speakers) and therapeutic listening.

"The best part of this group is that although all our children have (a) different diagnosis, the same problems arise for all of us – I don't feel so alone anymore"



Men at Work

This group has been re-started this year to focus on the male carers of our children with disabilities. The group is facilitated by Jonathan Rhodes and attended by men only and deals with the issues that face men as well as a social outlet!

Safety Strategies

A one day workshop for carers to learn to understand and diffuse aggressive and violent behaviour. The workshop taught carers how to deal positively and practically with children who can become physically violent.

Advocacy

Local member, Malcolm Turnbull MP met with our carers in August 2008. Carers lobbied Mr Turnbull with regard to eligibility for services and funding, tax offsets for medical expenses, carer discretion of funding, supported accommodation, respite care, education, carers card and emergency services. In February 2009, this was followed up by a similar open forum for carers in anticipation of *Who Cares...?* report which was delivered by parliament in May.

Carers Book

Twenty carers from across all our support groups wrote stories of their experiences as carers culminating in a book "Opening the Doors, The Hidden Life of Carers" This was launched for Carers Week in October 2008 by Dorothy McRae-McMahon. The book raises money for our Care Fund and has been cathartic for our carers, affirming their strength, determination as carers and educating those reading the book on the difficulties of being a carer.



Legal issues

Sydney solicitor Stephen Booth attended carers' groups to discuss legal issues facing the families of children with disabilities. Questions raised and addressed were wills and trusts, enforcing those when parents are deceased and physical, financial, and emotional care for children. Stephen offers his services free of charge and attends groups with Holdsworth approximately twice a year – these groups are always highly attended.

Partnerships

Four times during the year we had 25 boys from Sydney Grammar coming to the Centre. By putting them through a mock Funsworth Program and a presentation we explained to them about what Holdsworth offers people with intellectual disabilities. The Sydney Grammar presentations have been a great way to attract volunteers, advertise our Centre and raise awareness.

We have had support from ESMAP and Sydney MCS to reach carers from culturally and linguistically diverse backgrounds in the Eastern Suburbs. We expect this to lead to our supporting a group of Italian carers, followed by a Greek carers group. Similarly, we have been working with JewishCare to discuss accessing and assisting Russian carers.

We are working with Junction House to devise a resources list for the area for carers and re-establishing the Chinese Carers group working in conjunction with the Australian Nursing Home Foundation Limited/ Stanley Hunt Centre and Ultimo Community Centre who work with elderly Chinese and their carers living in the Sydney LGA. We are talking to NAIDOC and Randwick Council to discuss what we can do to access Aboriginal carers in the area to offer support groups and have met with youth groups and with local schools to ascertain if there is a need for a young carers support group in the area.

We have met with staff from the Magnolia Centre to discuss a quarterly contribution from the Care Fund to Magnolia so that our Carers may access their services free of charge and are helping to set up a Carers

Resource Library section at Waverley Library. Books have been chosen and there will be a launch with a specific section of Waverley Library dedicated to carers. There is a possibility of also setting up within the Carers section a 'quiet area' with a study nook and computer for young carers.

Staffing

We were very lucky to be able to recruit Louise Gourley and Kim Tipoki as our new coordinators with virtually no breaks following the departures of Wendy Imashev and Sarah Sillar.



Looking ahead: focusing on possibilities

Holdsworth Disability Services is now running 18 different programs (11 for children and 7 for adults) plus regular camps and sexual health workshops. In the year ahead we will keep on concentrating on removing barriers to social inclusion for our clients. Everything will be aimed towards increasing the independence of our clients. For our fast growing variety of programs we will be looking for sustainability and safety to ensure the highest possible standard of service delivery.

One of major focus points for the upcoming year will be to up-skill and empower our carers. We will be looking into running various workshops and training session for carers to equip them with the necessary knowledge and skills they need for support in their caring role while helping them to develop as community leaders in their talent area.

Over the last years Carer Services has been concentrating a lot of its energy on people in need and facing emergencies. We will keep on doing all our good work in these areas but we are also hoping to lighten things up a bit and make Holdsworth the place you go to have some fun and forget your worries for a while. We are hoping to establish creative groups in areas such as art, jewellery making, drama etc.

Through our support groups, carers have surfaced who are immensely proactive, well informed and dedicated to fashioning change in the future by lobbying and working with councils, state and federal government organisations creating their own platform for a better future for carers. These carers are being encouraged and supported by Holdsworth to be heard and understood by government agencies •

Community Transport

Holdsworth Community Transport continues to provide Individual and Group Transport for elderly and disabled Woollahra and Eastern Suburbs residents who are unable to use public transport.

It has become evident over the years that community transport does much to improve people's quality of life as well as allow them to access services they may otherwise be unable to use.

The aim of the service is to focus on maintaining the quality of life of the disadvantaged members of our community and ensure they do not succumb to premature or inappropriate long term residential care. This applies particularly to those who have physical and intellectual disabilities and to frail elderly people whose opportunities for social interaction are severely restricted by lack of mobility.

Services usage

	Bus	Car	Taxi	Other	Total	Unmet	Cancelled
Trips	17,748	7,879	122	72	25,821	53	1,771
Clients	7,944	3,744	122	36	11,846		

Trips	Daycare	Social Support	Shopping	Hospital	Medical	Other	Total
	1,841	14,302	1,777	1,105	4,439	2,357	25,821

Journeys: 1,580 Kilometres: 97,607 Ave Journey: 61 kms

Highlights

Total number of trips (25,821) increased by 28% compared with last year. (18,557) However a big part of increase is on bus or group transport. It increased by 37% (17,748:11,081).

Individual Transport has only increased by 6% (7,849: 7,385), despite the purchase of a third car for this service and enhanced client assessment. Each day we transported about 50 people, either one-way or return, 12-15 by car and the rest by bus.

Punctuality and reliability of the service has continued to improve, with client waiting time for return individual transport minimised to just 30 minutes after a phone call.

The shopping bus services remain very popular activity among Woollahra seniors. Average numbers of shoppers per journey is ten.

During the last quarter this year we conducted the Woollahra Link – Community Shuttle bus pilot project. We had 26 runs and achieved 384 trips with an average of 14 trips or 9 people per run. We accept that initial numbers are low, but believe take up will increase as people become more aware of this service.

Community Transport works closely with both Disability and Aged Services in providing both individual and group transport. Client demand for buses has continued to increase over the year. Drivers also play an important role as part of the Aged or Disability team working with clients. Holdsworth Community Transport is the only community bus provider in Woollahra LGA. Our service provides buses on a cost recovery basis, or with small profit, to other community organisations and/or self managed groups such as Probes clubs, Woollahra Preschool, Emanuel Kindergarten, Emanuel Preschool, Jewish Women Association of NSW, Miroma Disability Service, Goodwin Village,



Greek Welfare Centre, ECHO Neighbourhood Centre Chinese Group Transport, Jewish Care, Lindsay House, Double Bay Primary School, Glenmore Road Primary school, Ascham School (daily permanent pick up and drop off), Rainbow Street Public School and Woollahra Council for worksite inspection and for induction process of newly recruited workers. We also continue to provide transport to Woollahra Seniors Choir when visiting nursing homes to sing for their residents ●

Services for Seniors

Across all our programs we are nearly reaching our full capacity. Since July 2008 our maximum number of people on the buses has risen from 10 to 15. After allowing room for staff and volunteers, we nearly always require the use of our larger buses, where previously the smaller buses were sufficient.

Demand is increasing all the time, which is great, but puts pressure on us to find additional funding and physical resources, especially for our memory loss groups, who require special assistance .

Improvements to programs range and quality

We have released four editions of the *Four Seasons* Newsletter. The newsletter is proving to be a very effective promotional tool and reaches a wider audience than just its recipients. The document is shared amongst friends and creates interest and enquiries from the general community.

During the year we continued to offer both *Music Appreciation* and *Saturday Night Fever* which were piloted in the second half of the previous year. This year we took over from Woollahra Seniors the Thursday program for which we had previously supplied transport services. As part of our healthy ageing initiatives, we have developed a new cost-neutral YOGA program. Ilona our very patient instructor has been volunteering her services to us. Numbers are growing and Yoga is more and more in demand.

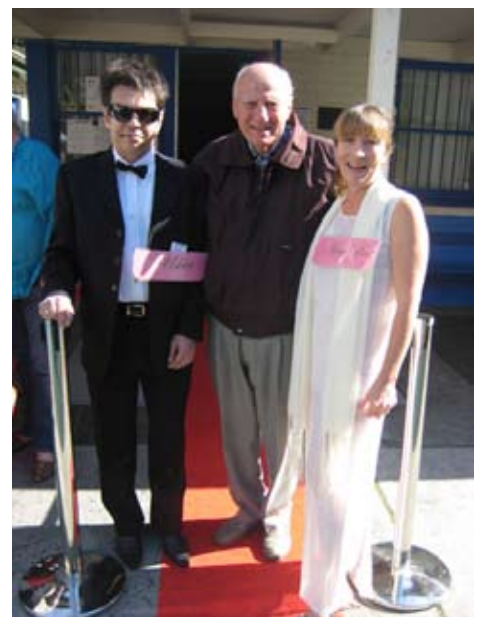
Growth plans for the year ahead are also based on a low cost/cost neutral model and include *Heartmoves* (a low cardio workout designed especially for seniors provided by Heart Foundation), and a *Low Vision Friendship Group*, which will meet at Rose Bay RSL fortnightly or monthly.

This year, we trialled a *Red Carpet* event for our Movie Matinees, with a view to running it in each term. This event was lots of fun and it has been decided to continue it to build our numbers.

Team growth & development

Since July 2008, our team has grown in size and depth, with a number of formerly casual staff now working on a permanent basis, and Sarah Harwood moving from administration to join the team. The team has gained much on-the-job experience and with the attendance of various training programs the team is even more equipped to deal with the daily challenges we may encounter.

Working closely with the Intake Coordinator Kathleen Hanstein has reduced our client processing time, assisted greatly in the maintenance of client records and expedited client transitions from prospective to active. Regular Case Management Meetings address issues of process and eligibility criteria and this has been excellent in terms of communication between all staff involved.



Team goals & aspirations

In Aged Services, we aim to continue to provide quality programs and services that focus on the clients' interests and needs. We will develop a formal survey to assist us in this pursuit which will be designed and distributed in our next newsletter in September.

We would hope that at some time in the future we could provide better on-site facilities for our clients including, space, equipment, storage and resources.

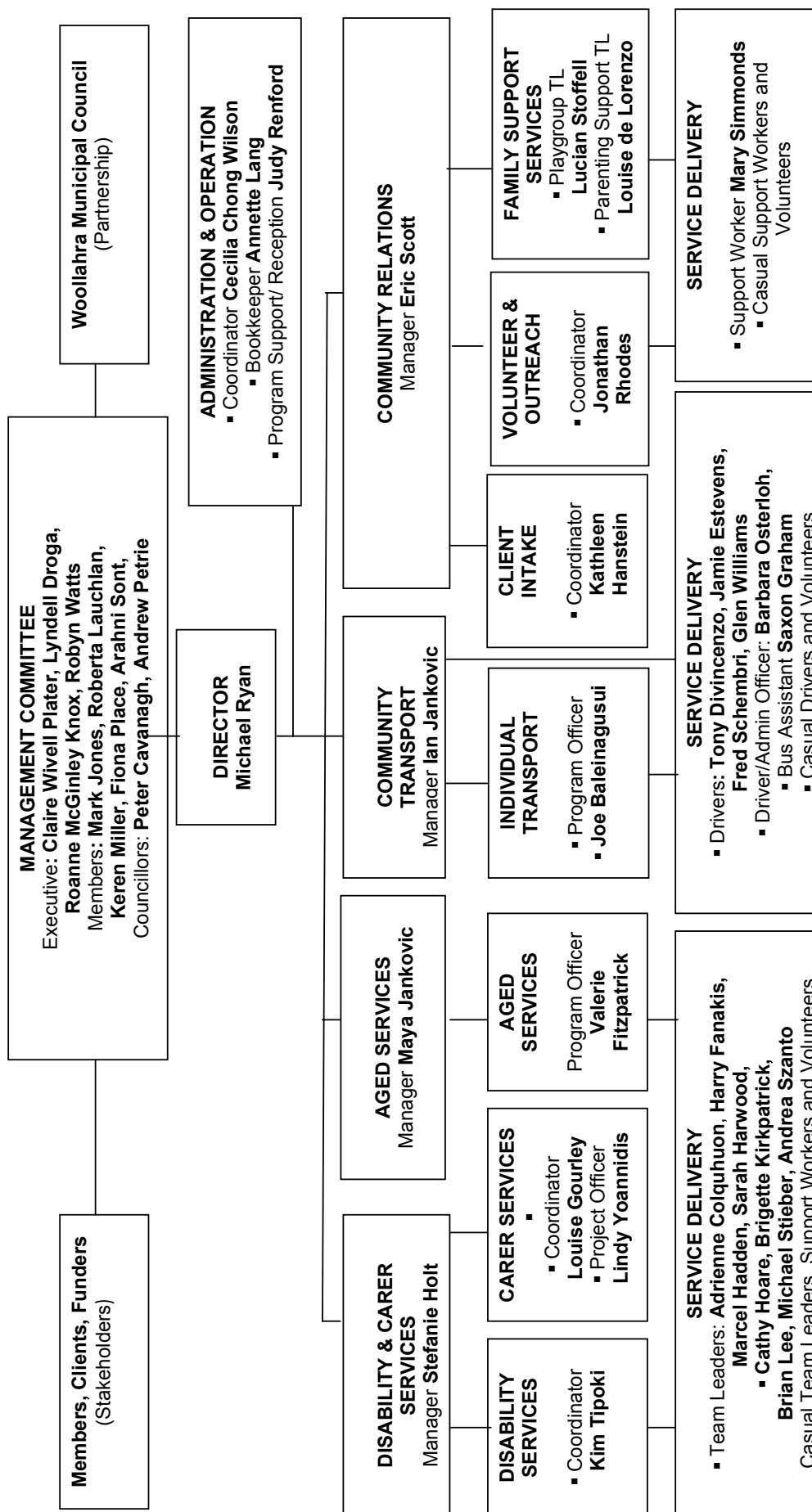
Our major goal is to grow and develop our Services and will be seeking more financial and other resources to support our work •



Social Support Hours for Seniors Delivered in 08/09				
Program	Hrs	Average Numbers	Weeks running	Hours for 08/09
Discussion Group	2.5	11	49	1,347
Tuesday Trips	6	12	47	3,384
Wednesday Trips	6	9	47	2,538
Saturday Fever	6	15	11	990
Cheap & Cheerful	6	10	22	1,320
Discovery Tours	7	29	11	2,233
Individual Shopping	2	15	50	1,500
Movie Matinee	2	9	22	396
Wednesday Club	6	9	47	2,538
Friday Club	6	8	47	2,256
Music Appreciation	2	10	22	440
Yoga	1	8	40	320
TOTAL				19,262



Organisational Chart



Organisation Chart as at September 2009

Holdsworth Street Community Centre Woollahra Inc

ABN 50 949 197 281

Financial Statements

For the Year Ended 30 June 2009

Holdsworth Street Community Centre Woollahra Inc

ABN 50 949 197 281

For the Year Ended 30 June 2009

CONTENTS

	<u>Page</u>
Financial Statements	
Committee Report 2	25
Auditors Independence Declaration Under Section 309C of the Corporations Act 2001	28
Income Statement	29
Balance Sheet	30
Statement of Changes in Equity	31
Statement of Cash Flows	32
Notes to the Financial Statements	33
Certificate by member of committee	47
Independent Audit Report	48
Schedules	50

Holdsworth Street Community Centre Woollahra Inc

ABN 50 949 197 281

Committee Report

For the Year Ended 30 June 2009

Your committee members submit the financial report of the association for the financial year ended 30 June 2009.

1. General information

(a) Committee Members

The names of committee members throughout the year and at the date of this report are:

Claire Wivell Plater	Chairperson
Lyndell Droga	Deputy Chairperson
Roanne McGinley Knox	Treasurer
Robyn Watts	Secretary
Mark Jones	Committee Member
Roberta Lauchlan	Committee Member; Appointed 26 November 2008
Keren Miller	Committee Member
Fiona Place	Committee Member; Appointed 24 September 2008
Arahn Sont	Committee Member
Yvonne Stewart	Committee Member; Resigned 24 September 2008
Cr Isabelle Shapiro, Deputy Mayor	Woollahra Council representative to 24 September 2008
Cr David Shoebridge	Woollahra Council representative to 24 September 2008
Cr Andrew Petrie, Mayor	Woollahra Council representative from 22 October 2008
Cr Peter Cavanagh	Woollahra Council representative from 22 October 2008

(b) Principal Activities

The principal activities of association during the financial year was the provision of community-based services in the Woollahra area.

(c) Significant Changes

No significant change in the nature of these activities occurred during the year.

2. Business review

Operating result

The profit of the association for the financial year amounted to \$ 11,574 (2008: \$ 82,067).

Holdsworth Street Community Centre Woollahra Inc

ABN 50 949 197 281

Committee Report

For the Year Ended 30 June 2009

3. Other items

(a) After balance date events

No matters or circumstances have arisen since the end of the financial year which significantly affected or may significantly affect the operations of the association, the results of those operations or the state of affairs of the association in future financial years.

(b) Auditors Independence Declaration

The lead auditors independence declaration for the year ended 30 June 2009 has been received and can be found on page 4 of the financial report.

(c) Significant Changes in State of Affairs

No significant changes in the association's state of affairs occurred during the financial year.

4. Indemnifying Officers or Auditors

No indemnities

No indemnities have been given or insurance premiums paid, during or since the end of the financial year, for any person who is or has been an officer or auditor of Holdsworth Street Community Centre Woollahra Inc.

Holdsworth Street Community Centre Woollahra Inc

ABN 50 949 197 281

Committee Report

For the Year Ended 30 June 2009


5. Meetings of Committee Members

During the financial year, 9 meetings of committee members were held. Attendances by each director during the year were as follows:

	Committee Members' Meetings	
	Eligible to attend	Number attended
Claire Wivell Plater	9	8
Lyndell Droga	9	7
Roanne McGinley Knox	9	7
Robyn Watts	9	6
Mark Jones	9	7
Roberta Lauchlan	6	6
Keren Miller	9	2
Fiona Place	7	7
Arahni Sont	9	7
Yvonne Stewart	2	2
Cr Isabelle Shapiro	2	1
Cr David Shoebridge	2	1
Cr Andrew Petrie	7	6
Cr Peter Cavanagh	7	3

Signed in accordance with a resolution of the Members of the Committee:

Chairperson:


Claire Wivell Plater

Treasurer:


Roanne McGinley Knox

Dated

8/09/2009

Holdsworth Street Community Centre Woollahra Inc

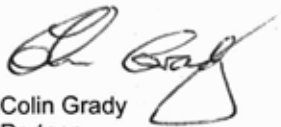
ABN 50 949 197 281

Auditors Independence Declaration under Section 307C of the Corporations Act 2001

I declare that, to the best of my knowledge and belief, during the year ended 30 June 2009 there have been:

- (i) no contraventions of the auditor independence requirements as set out in the Corporations Act 2001 in relation to the audit; and
- (ii) no contraventions of any applicable code of professional conduct in relation to the audit.

DFK Laurence Varnay
Chartered Accountants



Colin Grady
Partner

Sydney

8th September 2009

Holdsworth Street Community Centre Woollahra Inc

ABN 50 949 197 281

Income Statement

For the Year Ended 30 June 2009

		2009	2008
	Note	\$	\$
Revenue	2	2,254,803	2,049,749
Employee benefits expense		(1,654,696)	(1,386,945)
Depreciation, amortisation and impairments		(150,717)	(160,711)
Other expenses		(437,816)	(420,026)
Profit attributable to members		11,574	82,067

The accompanying notes form part of these financial statements.

Holdsworth Street Community Centre Woollahra Inc

ABN 50 949 197 281

Balance Sheet

30 June 2009

	Note	2009 \$	2008 \$
ASSETS			
Current assets			
Cash and cash equivalents	3	716,187	795,149
Trade and other receivables	5	221,565	198,657
Other assets	6	(670)	1,400
Total current assets		937,082	995,206
Non-current assets			
Property, plant and equipment	7	417,740	418,899
Total non-current assets		417,740	418,899
TOTAL ASSETS		1,354,822	1,414,105
LIABILITIES			
Current liabilities			
Trade and other payables	8	347,223	412,358
Short-term provisions	9	94,644	73,738
Other Liabilities	10	222,000	248,622
TOTAL LIABILITIES		663,867	734,718
NET ASSETS		690,955	679,387
EQUITY			
Reserves	12	616,808	600,000
Retained earnings		74,148	79,388
TOTAL EQUITY		690,956	679,388

The accompanying notes form part of these financial statements.

Holdsworth Street Community Centre Woollahra Inc

ABN 50 949 197 281

Statement of Changes in Equity

For the Year Ended 30 June 2009

2009

	Retained Surplus	Holdsworth Care Fund Reserve	General Reserve	Asset Replacement Reserve	Total
	\$	\$	\$	\$	\$
Balance at 1 July 2008	79,388	-	170,000	430,000	679,388
Surplus attributable to the association	11,576	-	-	-	11,576
Transfers to and from reserves	-	-	-	-	-
- care fund reserve	(41,809)	41,809	-	-	-
- general reserve	25,000	-	(25,000)	-	-
Sub-total	(5,233)	41,809	(25,000)	-	11,576
Balance at 30 June 2009	74,155	41,809	145,000	430,000	690,964

2008

	Retained Surplus	Holdsworth Care Fund Reserve	General Reserve	Asset Replacement Reserve	Total
	\$	\$	\$	\$	\$
Balance at 1 July 2007	7,319	-	135,000	455,000	597,319
Surplus attributable to the association	82,069	-	-	-	82,069
Transfers to and from reserves	-	-	-	-	-
- asset replacement reserve	25,000	-	-	(25,000)	-
- general reserve	(35,000)	-	35,000	-	-
Sub-total	72,069	-	35,000	(25,000)	82,069
Balance at 30 June 2008	79,388	-	170,000	430,000	679,388

The accompanying notes form part of these financial statements.

Holdsworth Street Community Centre Woollahra Inc

ABN 50 949 197 281

Statement of Cash Flows

For the Year Ended 30 June 2009

	2009	2008
Note	\$	\$
Cash from operating activities:		
Receipts from customers, grants and other income	2,207,847	1,962,468
Payments to suppliers and employees	(2,184,333)	(1,821,259)
Interest received	52,327	52,736
Net cash provided by (used in) operating activities	75,841	193,945
	14(a)	
Cash flows from investing activities:		
Proceeds from sale of plant and equipment	10,909	34,545
Acquisition of property, plant and equipment	(165,713)	(220,541)
Net cash provided by (used in) investing activities	(154,804)	(185,996)
	7(a)	
Net increase (decreases) in cash held	(78,963)	7,949
Cash at beginning of financial year	795,150	787,201
Cash at end of financial year	716,187	795,150
	3	

The accompanying notes form part of these financial statements.

Holdsworth Street Community Centre Woollahra Inc

ABN 50 949 197 281

Notes to the Financial Statements

For the Year Ended 30 June 2009

1 Statement of Significant Accounting Policies

(a) General information

The financial report is a general purpose financial report that has been prepared in accordance with Australian Accounting Standards (including Australian Accounting Interpretations) of the Australian Accounting Standards Board and the requirements of the Associations Incorporation Act 1984 of New South Wales.

Holdsworth Street Community Centre Woollahra Inc is an association incorporated and domiciled in New South Wales, Australia.

The financial report covers Holdsworth Street Community Centre Woollahra Inc as an individual entity complies with all Australian equivalents to International Financial Reporting Standard (AIFRS) in their entirety.

The following is a summary of the material accounting policies adopted by the association in the preparation of the financial report. The accounting policies have been consistently applied, unless otherwise stated.

(b) Basis of Preparation

The financial report has been prepared on an accruals basis and is based on historical costs modified, where applicable, by the measurement at fair value of selected non-current assets, financial assets and financial liabilities.

(c) Comparative Figures

When required by Accounting Standards, comparative figures have been adjusted to conform to changes in presentation for the current financial year.

(d) Property, Plant and Equipment

Each class of property, plant and equipment is carried at cost or fair value less, where applicable, any accumulated depreciation and impairment losses.

Plant and equipment

Plant and equipment are measured on the cost basis less depreciation and impairment losses.

Depreciation

The depreciable amount of all fixed assets including buildings and capitalised leased assets, is depreciated on a straight-line basis over their useful lives commencing from the time the asset is held ready for use. Leasehold improvements are depreciated over the shorter of either the unexpired period of the lease or the estimated useful lives of the improvements.

The depreciation rates used for each class of depreciable assets are:

Motor Vehicles	20%
Office Equipment	20-30%
Computer Equipment	20-40%

The assets' residual values and useful lives are reviewed, and adjusted if appropriate, at each balance sheet date.

Holdsworth Street Community Centre Woollahra Inc

ABN 50 949 197 281

Notes to the Financial Statements

For the Year Ended 30 June 2009

1 Statement of Significant Accounting Policies continued

(e) Cash and Cash Equivalents

Cash and cash equivalents include cash on hand, deposits held at call with banks, other short-term highly liquid investments with original maturities of three months or less, and bank overdrafts. Bank overdrafts are shown within short-term borrowings in current liabilities on the balance sheet.

(f) Employee Benefits

Provision is made for the association's liability for employee benefits arising from services rendered by employees to balance date. Employee benefits that are expected to be settled within one year have been measured at the amounts expected to be paid when the liability is settled. Employee benefits payable later than one year have been measured at present value of the estimated future cash outflows to be made for those benefits.

(g) Provisions

Provisions are recognised when the association has a legal or constructive obligation, as a result of past events, for which it is probable that an outflow of economic benefits will result and that outflow can be reliably measured.

(h) Borrowing Costs

Borrowing costs directly attributable to the acquisition, construction or production of assets that necessarily take a substantial period of time to prepare for their intended use or sale, are added to the cost of those assets, until such time as the assets are substantially ready for their intended use or sale.

All other borrowing costs are recognised in income in the period in which they are incurred.

(i) Income Tax

The association is a community service organisation and is endorsed for charity tax concessions as follows:

- Income Tax Exemption under sub-division 50-B of the Income Tax Act 1997;
- FBT exemption under section 123C of the Fringe Benefits Tax Assessment Act;
- GST concessions under division 176 of a New Tax System (Goods and Services Tax) Act.

(j) Revenue

Other revenue is recognised when the right to receive the revenue has been established.

Interest revenue is recognised on a proportional basis taking into account the interest rates applicable to the financial assets.

Revenue from the rendering of services is recognised upon the delivery of the service to the customers.

All revenue is stated net of the amount of goods and services tax (GST).

Holdsworth Street Community Centre Woollahra Inc

ABN 50 949 197 281

Notes to the Financial Statements

For the Year Ended 30 June 2009

1 Statement of Significant Accounting Policies continued

(k) Goods and Services Tax (GST)

Revenues, expenses and assets are recognised net of the amount of GST, except where the amount of GST incurred is not recoverable from the Tax Office. In these circumstances the GST is recognised as part of the cost of acquisition of the asset or as part of an item of the expense. Receivables and payables in the balance sheet are shown inclusive of GST. Cash flows are presented in the cash flow statement on a gross basis, except for the GST component of investing and financing activities, which are disclosed as operating cash flows.

(l) Government Grants

Government grants are recognised at fair value where there is reasonable assurance that the grant will be received and all grant conditions will be met. Grants relating to expense items are recognised as income over the periods necessary to match the grant to the costs they are compensating. Grants relating to assets are credited to deferred income at fair value and are credited to income over the expected useful life of the asset on a straight-line basis.

Holdsworth Street Community Centre Woollahra Inc

ABN 50 949 197 281

Notes to the Financial Statements

For the Year Ended 30 June 2009

	2009	2008
	\$	\$
2 Revenue		
(a) Detailed table		
Government grants	1,777,140	1,666,303
Fees	234,798	178,260
Rental income	50,924	37,757
Interest received	52,327	52,736
Gain and loss on disposal of assets	(5,372)	34,545
Member subscriptions	16,534	13,104
Donations	64,133	32,719
Other income	64,319	34,325
Total	2,254,803	2,049,749
3 Cash and Cash Equivalents		
Cash on hand	1,000	1,000
Bank balances	94,492	284,382
Short-term deposits	620,695	509,767
Total cash and cash equivalents in the statement of cash flows	716,187	795,149
Reconciliation of Cash		
Cash at the end of the financial year as shown in the cash flow statement is reconciled to items in the balance sheet as follows:		
Cash and cash equivalents	716,187	795,150
	716,187	795,150
4 Restricted Cash		
Trade payables	19,130	545
Provisions	94,644	73,738
Income in Advance ^	222,000	248,621
Asset replacement reserve	471,808	430,000
Less: book value of assets	(417,740)	(418,899)
Holdsworth care fund reserve	41,808	
General reserve *	145,000	170,000
Total	576,650	504,005

* Amounts allocated to the General Reserve decreased to the equivalent of 3.5 weeks' working capital.

^ Income in advance - refer to Note 10(a) for further details.

Holdsworth Street Community Centre Woollahra Inc

ABN 50 949 197 281

Notes to the Financial Statements

For the Year Ended 30 June 2009

	2009	2008
	\$	\$
5 Trade and Other Receivables		
CURRENT		
Trade receivables	<u>221,565</u>	198,657
	<u>221,565</u>	<u>198,657</u>
6 Other Current Assets		
Prepayments	<u>(670)</u>	1,400
Total	<u>(670)</u>	<u>1,400</u>
7 Property Plant and Equipment		
Plant & equipment		
At cost	144,145	119,696
Less: Accumulated Depreciation	<u>(59,573)</u>	<u>(79,769)</u>
Total plant and equipment	<u>84,572</u>	<u>39,927</u>
Motor vehicles		
At cost	618,968	561,064
Less accumulated depreciation	<u>(314,915)</u>	<u>(214,760)</u>
Total motor vehicles	<u>304,053</u>	<u>346,304</u>
Computer equipment		
At cost	76,430	109,827
Less accumulated depreciation	<u>(47,315)</u>	<u>(77,159)</u>
Total computer equipment	<u>29,115</u>	<u>32,668</u>
Total property, plant and equipment	<u>417,740</u>	<u>418,899</u>

Holdsworth Street Community Centre Woollahra Inc

ABN 50 949 197 281

Notes to the Financial Statements

For the Year Ended 30 June 2009

7 Property Plant and Equipment continued

(a) Movements in Carrying Amounts

Movement in the carrying amount for each class of property, plant and equipment between the beginning and the end of the current financial year

	Plant and Equipment \$	Motor Vehicles \$	Computer Equipment \$	Total \$
Current Year				
Balance at the beginning of year	39,927	346,305	32,667	418,899
Additions	64,071	85,730	15,912	165,713
Disposals	-	(28,128)	-	(28,128)
Accumulated depreciation write-off of disposal	-	11,973	-	11,973
Depreciation expense	(20,710)	(110,542)	(19,465)	(150,717)
Carrying amount at the end of year	<u>83,288</u>	<u>305,338</u>	<u>29,114</u>	<u>417,740</u>
Prior Year				
Balance at the beginning of year	38,520	265,590	54,572	358,682
Additions	13,601	206,940	-	220,541
Depreciation expense	(13,744)	(126,612)	(20,355)	(160,711)
Adjustments and reclassifications	1,550	387	(1,550)	387
Carrying amount at the end of year	<u>39,927</u>	<u>346,305</u>	<u>32,667</u>	<u>418,899</u>

Holdsworth Street Community Centre Woollahra Inc

ABN 50 949 197 281

Notes to the Financial Statements

For the Year Ended 30 June 2009

	2009	2008
	\$	\$
8 Trade and Other Payables		
CURRENT		
Trade payables	19,130	545
Sundry payables and accrued expenses	94,375	146,125
Government grants repayable	233,718	265,688
	<u>347,223</u>	<u>412,358</u>
9 Provisions		
Current	<u>94,644</u>	<u>73,738</u>

(a) **Movement in carrying amounts**

	Employee entitlements
	\$
Opening balance at 1 July 2008	73,738
Unused entitlements accrued	20,906
Balance at 30 June 2009	<u>94,644</u>

10 Other Liabilities

Government grants	192,000	211,753
Other deferred income	30,000	36,869
Total	<u>222,000</u>	<u>248,622</u>

(a) **Deferred Income - Grants in Advance**
Grants in Advance

DADHC	-	26,428
DSR	10,000	-
MOT	-	3,325
Woollahra Council	180,000	180,000
Other	2,000	2,000
Total	<u>192,000</u>	<u>211,753</u>

Grants in Advance represent amounts prepaid for the forthcoming financial year.

Grants in Trust represent amounts received, but not fully expended, in the current financial year and carried forward to the next financial year, subject to approval to expend those amounts on future projects.

Holdsworth Street Community Centre Woollahra Inc

ABN 50 949 197 281

Notes to the Financial Statements

For the Year Ended 30 June 2009

	2009	2008
	\$	\$
11 Reserves		
The general reserve records funds set aside for future expansion of the association.		
12 Reserves Allocation		
(a)		
Computer equipment & software	30,000	30,000
Holdsworth Care Fund Reserve	41,808	
Office refurbishment & equipment	100,000	100,000
Buses & motor vehicles	300,000	300,000
Working capital	145,000	170,000
Total	616,808	600,000

The Committee has determined that the total value of the Reserves at 30 June be allocated to the above planned costs and provisions associated with the on-going replacement and working capital requirements.

The Directors each year review the assets of the business and have determined that the value of the Reserves are appropriate for the Centre as of 30 June 2009.

The Holdsworth Care Fund Reserve will be used for future charitable purposes.

13 Auditors' Remuneration

Remuneration of the auditor of the entity for:

- Auditing or reviewing the financial report	7,500	6,786
--	-------	-------

Holdsworth Street Community Centre Woollahra Inc

ABN 50 949 197 281

Notes to the Financial Statements

For the Year Ended 30 June 2009

	2009	2008
	\$	\$
14 Cash Flow Information		
(a) Reconciliation of Cash Flow from Operations with Profit after Income Tax		
Net surplus for the period	11,574	82,067
Cash flows excluded from profit attributable to operating activities		
Non-cash flows in profit		
Depreciation	150,717	160,711
Net (gain)/loss on disposal of property, plant and equipment	5,372	(34,545)
changes in assets and liabilities		
(Increase)/decrease in trade and term receivables	(22,909)	(180,054)
Increase/(decrease) in deferred income	(26,621)	35,915
(Increase)/decrease in prepayments	2,069	(1,400)
Increase/(decrease) in trade payables and accruals	(65,135)	123,135
Balancing adjustment	(132)	(387)
Increase/(decrease) in provisions	20,906	8,503
	<u>75,841</u>	<u>193,945</u>

15 Change in Accounting Policy

All other pending Standards issued between the previous financial report and the current reporting dates have no application to the association.

2004-3	AASB 1: First-time Adoption of AIFRS
	AASB 101: Presentation of Financial Statements
	AASB 124: Related Party Disclosures
2005-1	AASB 139: Financial Instruments: Recognition and Measurement
2005-2	AASB 1023: General Insurance Contracts
2005-4	AASB 139: Financial Instruments: Recognition and Measurement
	AASB 132: Financial Instruments: Disclosure and Presentation
2005-9	AASB 4: Insurance Contracts
	AASB 1023: General Insurance Contracts
	AASB 139: Financial Instruments: Recognition and Measurement
	AASB 132: Financial Instruments: Disclosure and Presentation
2006-1	AASB 121: The Effects of Changes in Foreign Exchange Rates
New Standard	AASB 119: Employee Benefits: December 2004

Holdsworth Street Community Centre Woollahra Inc

ABN 50 949 197 281

Notes to the Financial Statements

For the Year Ended 30 June 2009

15 Change in Accounting Policy continued

The following Australian Accounting Standards issued or amended and are applicable to the association but not yet effective and have not been adopted in preparation of the financial statements at reporting date.

AASB 2007-3 Amendments to Australian Accounting Standards	AASB 5: Non-current Assets Held for Sale and Discontinued Operations	The disclosure requirements of AASB 114: Segment Reporting have been replaced due to the issuing AASB 8: Segment Reporting in February 2007. These amendments will involve changes to segment reporting disclosures. However it is anticipated there will be no direct impact on recognition and measure ment criteria amounts included in the financial report as the association does not fall within the scope of AASB 8.	1 January 2009	1 July 2009
	AASB 6: Exploration for and Evaluation of Mineral			
	AASB 102: Inventories			
	AASB 107: Cash Flow Statements			
	AASB 119: Employee Benefits			
	AASB 127: Consolidated and Separate Financial Statements			
	AASB 134: Interim Financial Reporting			
	AASB: 136: Impairment of Assets			
	AASB 1023: General Insurance Contracts			
	AASB 1038: Life Insurance Contracts			
AASB 8: Operating Segments	AASB 114: Segment Reporting	As above	1 January 2009	1 July 2009
AASB 2007-6 Amendments to Australian Accounting Standards	AASB 1: First-time Adoption of AIFRS	AASB 1: First-time Adoption of AIFRS	1 January 2009	1 July 2009
	AASB 101: Presentation of Financial Statements	AASB 101: Presentation of Financial Statements		
	AASB 107: Cash Flow Statements	AASB 107: Cash Flow Statements		
	AASB 111: Construction Contracts	AASB 111: Construction Contracts		
	AASB 116: Property, Plant and Equipment	AASB 116: Property, Plant and Equipment		
	AASB 138: Intangible Assets	AASB 138: Intangible Assets		

Holdsworth Street Community Centre Woollahra Inc

ABN 50 949 197 281

Notes to the Financial Statements

For the Year Ended 30 June 2009

15 Change in Accounting Policy continued

AASB 123: Borrowing Costs	AASB 123: Borrowing Costs	As above	1 January 2009	1 July 2009
AASB 2007-8 Amendments to Australian Accounting Standards	AASB 101: Presentation of Financial Statements	The revised AASB 101: Presentation of Financial Statements issued in September 2007 requires the presentation of a statement of comprehensive income and makes changes to the statement of changes in recognised income and expenditure.	1 January 2009	1 July 2009
AASB 101	AASB 101: Presentation of Financial Statements	As above	1 January 2009	1 July 2009

Holdsworth Street Community Centre Woollahra Inc

ABN 50 949 197 281

Notes to the Financial Statements

For the Year Ended 30 June 2009

16 Income & Expenditure by Service

(a) 2009

	Community Transport \$	Care Fund \$	Aged & Dementia Services \$	Community Relations \$	Disability & Carer Services \$	Admini- stration \$	Total \$
Income							
Grant Income							
Woollahra Council	221,030	-	213,855	223,242	61,873	-	720,000
MOT	212,719	-	-	-	-	-	212,719
DADHC	-	-	134,001	54,976	555,928	-	744,905
DOCS	-	-	-	14,046	-	-	14,046
Carers Australia	-	-	-	-	-	-	-
SESIAHS	19,900	-	-	-	-	-	19,900
Service Fee HFS	-	-	-	31,659	-	-	31,659
Other	28,694	-	7,702	-	29,175	-	65,571
Activities Income							
Hire Income	16,179	-	-	34,745	-	-	50,924
Fundraising & Donations	-	64,133	-	-	-	-	64,133
Client Fees & Memberships	39,791	-	68,220	28,615	66,513	16,534	219,673
Interest	-	-	-	-	-	52,327	52,327
Misc Income	-	2,548	-	-	-	61,771	64,319
Recoveries							
Vehicle Costs	176,636	-	(79,486)	-	(97,150)	-	-
Administration	(83,935)	-	(67,891)	(67,923)	(121,400)	341,149	-
Total Income	631,014	66,681	276,401	319,360	494,939	471,781	2,260,176
Expenses							
Employment Expenses	441,589	-	223,188	278,556	458,026	268,699	1,670,058
Accounting & audit fees	-	-	-	-	-	50,234	50,234
Depreciation	112,002	-	-	-	-	38,715	150,717
Insurance	10,429	-	-	-	-	5,618	16,047
Program Activities & Resources	57,885	-	23,136	17,914	28,783	-	127,718
Repairs & Maintenance	-	-	-	-	-	24,381	24,381
Telephone	5,632	-	1,972	-	3,980	16,823	28,407
All other expenses	3,477	24,872	28,105	22,890	4,150	97,544	181,038
Total expenses	631,014	24,872	276,401	319,360	494,939	502,014	2,248,600
Total	-	41,809	-	-	-	(30,233)	11,576

Holdsworth Street Community Centre Woollahra Inc

ABN 50 949 197 281

Notes to the Financial Statements

For the Year Ended 30 June 2009

16 Income & Expenditure by Service continued

(b) 2008

	Community Transport \$	Family Support \$	Aged Services \$	Community Relations \$	Disability Carer \$	Admini- stration \$	Total \$
Income							
Grant Income							
Woollahra Council	95,688	62,130	316,899	158,088	37,195	-	670,000
MOT	180,631	-	-	-	-	-	180,631
DADHC	-	-	168,581	54,661	482,878	-	706,120
DOCS	-	12,237	-	14,957	-	-	27,194
Carer Australia	-	-	-	-	682	-	682
SESIAHS	17,000	-	-	-	-	-	17,000
Other	45,612	-	4,236	1,508	13,320	-	64,676
Activities Income							
Hire income	7,857	-	-	29,900	-	-	37,757
Client fees & memberships	39,288	41,576	37,037	2,863	57,496	13,104	191,364
Fundraising & donations	-	-	-	-	-	32,719	32,719
Interest	-	-	-	-	-	52,736	52,736
Misc income	-	-	-	-	-	68,870	68,870
Recoveries							
Vehicle costs	240,101	-	(135,104)	-	(104,997)	-	-
Administration	(70,754)	(34,306)	(191,158)	(50,135)	(41,289)	387,642	-
Total Income	555,423	81,637	200,491	211,842	445,285	555,071	2,049,749
Expenses							
Employment expenses	357,926	65,728	173,322	178,845	372,440	255,331	1,403,592
Accounting & audit fees	-	-	-	-	-	44,665	44,665
Depreciation	126,612	-	-	-	-	34,099	160,711
Insurance	858	-	-	-	-	400	1,258
Program activities & resources	63,194	6,830	10,573	5,431	44,728	-	130,756
Repairs & maintenance	-	-	-	-	-	41,458	41,458
Telephone	5,098	-	679	-	2,239	25,592	33,608
All other expenses	1,735	9,079	15,917	27,566	25,878	71,457	151,632
Total Expenses	555,423	81,637	200,491	211,842	445,285	473,002	1,967,680
Net Surplus	-	-	-	-	-	82,069	82,069

Holdsworth Street Community Centre Woollahra Inc

ABN 50 949 197 281

Notes to the Financial Statements

For the Year Ended 30 June 2009

17 Association Details

The registered office of the association is:

Holdsworth Street Community Centre Woollahra Inc
64 Holdsworth Street
Woollahra NSW 2025

18 Fundraising Appeals

(a) Fundraising Income & Expenses

	2009
	\$
Donations	32,383
Fundraising	34,298
	<u>66,681</u>
Cost of fundraising activities	(12,625)
Total	<u>54,056</u>

(b) Application of funds for charitable purposes

The organisation has been endorsed as a Deductible Gift Recipient from 1 October 2008.

During the year, the organisation obtained net income of \$54,056 from Fundraising Appeals and Donations. This was the only source of income available to the organisation to meet its charitable purposes.

The amount has been transferred to Holdsworth Care Funds for future needs.

(c) Fundraising appeals conducted during the year:

Various raffles, cake stall and sale of donated goods.

19 Additional Information Required Under Charitable Fundraising Act 1991 (NSW)

	A	B	Surplus B - A	2009	2008
	\$	\$	\$	%	%
A divided by B					
Total cost of fundraising/ Gross Income from Fundraising	12,625	66,681	54,056	18.93	-
Net surplus from fundraising / Gross income from fundraising	54,056	66,681	-	81.07	-
Total cost of services/ Total expenditure	-	12,625	-	-	-
Total cost of services / Total income received	-	2,264,941	-	-	-

Holdsworth Street Community Centre Woollahra Inc

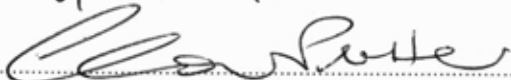
ABN 50 949 197 281

Certificate by member of committee

I, Clair Wivell Plater of 64 Holdsworth Street, Woollahra, NSW, and I, Roanne McGinley Knox of 64 Holdsworth Street, Woollahra, NSW, certify:

- (a) We are members of the committee of Holdsworth Street Community Centre Woollahra Inc.
- (b) We attended the annual general meeting of the association held on 24 September 2009.
- (c) We are authorised by the attached resolution of the committee to sign this certificate.
- (d) This annual statement was submitted to the members of the association at its annual general meeting.

Dated 08/09/2009.



Clair Wivell Plater



Roanne McGinley Knox

The accompanying notes form part of these financial statements.

Holdsworth Street Community Centre Woollahra Inc

ABN 50 949 197 281

Independent Audit Report to the members of Holdsworth Street Community Centre Woollahra Inc

Report on the Financial Report

We have audited the accompanying financial report of Holdsworth Street Community Centre Woollahra Inc, which comprises the balance sheet as at 30 June 2009, and the income statement, statement of changes in equity and statement of cash flows for the year ended that date, a summary of significant accounting policies, other explanatory notes and the statement by committee members.

Committee of Members' Responsibility for the Financial Report

The members of the association are responsible for the preparation and fair presentation of the financial report in accordance with Australian Accounting Standards (including the Australian Accounting Interpretations) and the *Association Incorporation Act 1984*. This responsibility includes: designing, implementing and maintaining internal control relevant to the preparation and fair presentation of the financial report that is free from material misstatement, whether due to fraud or error; selecting and applying appropriate accounting policies; and making accounting estimates that are reasonable in the circumstances.

Auditor's Responsibility

Our responsibility is to express an opinion on the financial report based on our audit. We conducted our audit in accordance with Australian Auditing Standards. These Auditing Standards require that we comply with relevant ethical requirements relating to audit engagements and plan and perform the audit to obtain reasonable assurance whether the financial report is free from material misstatement.

An audit involves performing procedures to obtain audit evidence about the amounts and disclosures in the financial report. The procedures selected depend on the auditor's judgement, including the assessment of the risks of material misstatement of the financial report, whether due to fraud or error. In making those risk assessments, the auditor considers internal control relevant to the association's preparation and fair presentation of the financial report in order to design audit procedures that are appropriate in the circumstances, but not for the purpose of expressing an opinion on the effectiveness of the entity's internal control. An audit also includes evaluating the appropriateness of accounting policies used and the reasonableness of accounting estimates made by the members, as well as evaluating the overall presentation of the financial report.

We believe that the audit evidence we have obtained is sufficient and appropriate to provide a basis for our audit opinion.

Holdsworth Street Community Centre Woollahra Inc

ABN 50 949 197 281

Independent Audit Report to the members of Holdsworth Street Community Centre Woollahra Inc

Independence

In conducting our audit, we have complied with the independence requirements of the *Association Incorporation Act 1984*. We confirm that the independence declaration required by the *Association Incorporation Act 1984*, provided to the members of Holdsworth Street Community Centre Woollahra Inc on , would be in the same terms if provided to the members as at the date of this auditor's report.

Auditor's Opinion

In our opinion the financial report of Holdsworth Street Community Centre Woollahra Inc is in accordance with the *Corporations Act 2001*, including:

- (a) giving a true and fair view of the association's financial position as at 30 June 2009 and of its performance for the year ended on that date; and
- (b) complying with Australian Accounting Standards (including the Australian Accounting Interpretations) and the Corporations Regulations 2001.

DFK Laurence Varnay
Chartered Accountants



Colin Grady
Partner

Sydney 8th September 2009



A member firm of DFK International a worldwide association of independent accounting firms and business advisers

Liability Limited by a scheme approved under Professional Standards Legislation

Level 7, 131 York Street
Sydney NSW 2000

POSTAL ADDRESS

PO Box Q819 QVB NSW 1230

TELEPHONE +61 2 9264 5400

FACSIMILE +61 2 9264 9294

EMAIL office@dfksydney.com

www.dfksydney.com

Holdsworth Street Community Centre Woollahra Inc

ABN 50 949 197 281

For the Year Ended 30 June 2009 30 June 2008

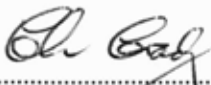
Disclaimer

The additional financial data presented on page 27 is in accordance with the books and records of the association which have been subjected to the auditing procedures applied in our statutory audit of the association for the year ended 30 June 2009. It will be appreciated that our statutory audit did not cover all details of the additional financial data. Accordingly, we do not express an opinion on such financial data and we give no warranty of accuracy or reliability in respect of the data provided. Neither the firm nor any member or employee of the firm undertakes responsibility in any way whatsoever to any person (other than Holdsworth Street Community Centre Woollahra Inc) in respect of such data, including any errors of omissions therein however caused.

Sydney

DFK Laurence Varnay
Chartered Accountants

30 September 2009


.....
Colin Grady, Partner

The accompanying notes form part of these financial statements.

Holdsworth Street Community Centre Woollahra Inc

ABN 50 949 197 281

For the Year Ended 30 June 2009 30 June 2008

Profit and Loss Account

	2009	2008
	\$	\$
Income		
Donations	64,133	32,719
Fees	234,798	178,260
Grants	1,777,140	1,666,303
Interest income	52,327	52,736
Member subscriptions	16,534	13,104
Other income	64,319	34,325
Rental income	50,924	37,757
Total income	2,260,175	2,015,204
Less: Expenses		
Accounting fees	42,734	37,880
Advertising	13,909	13,574
Auditors remuneration	7,500	6,786
Bank charges	2,683	2,098
Cleaning	42,912	29,688
Computer expenses	21,190	17,203
Consulting and professional fees	5,049	25,359
Depreciation	150,717	160,711
Electricity and water	7,063	5,489
Grant expense - Care Fund	12,247	-
Insurance	16,046	1,258
Leave pay	23,137	25,146
Long service leave	(2,231)	(16,401)
Motor vehicle expenses	57,884	63,194
Other employee costs	261,281	18,501
Postage	9,699	9,558
Printing and stationery	11,556	12,665
Program activities and resources	100,579	89,165
Promotion	12,961	11,066
Rental properties - rent paid	2,127	2,060
Repairs and maintenance	24,382	41,458
Salaries	1,196,529	1,205,233
Staff amenities	9,940	7,852
Staff training	12,652	14,690
Subscriptions	3,847	3,919
Sundry expenses	2,408	2,568
Superannuation contributions	121,185	101,685
Telephone and fax	28,407	33,609
Travel - domestic	2,689	3,577
Workers compensation insurance	42,144	38,092
Total Expenses	2,243,226	1,967,683
Other items:		
Gain and loss on disposal of assets	(5,372)	34,545
Profit before income tax	11,577	82,066

Holdsworth Family Services Inc

ABN 30 326 902 708

Financial Statements

For the Period Ended 30 June 2009

Holdsworth Family Services Inc

ABN 30 326 902 708

For the Period Ended 30 June 2009

CONTENTS

	<u>Page</u>
Financial Statements	
Committee Report	55
Auditors Independence Declaration under Section 307C of the Corporations Act 2001	57
Income Statement	58
Balance Sheet	59
Cash Flow Statement	60
Notes to the Financial Statements	61
Statement by Members of Committee	64
Independent Audit Report	65
Schedules	67

Holdsworth Family Services Inc

ABN 30 326 902 708

Committee Report

For the Period Ended 30 June 2009

Your Committee Members present their report of the association for the financial period ended 30 June 2009.

1. General information

Committee Members

The names of the committee members appointed throughout the period and at the date of this report are:

Names	Position	Appointed/Resigned
Lyndell Droga	Chairperson	Appointed 1 October 2008
Claire Wivell Plater	Deputy Chairperson	Appointed 1 October 2008
Roanne McGinley Knox	Treasurer	Appointed 1 October 2008
Robyn Watts	Secretary	Appointed 1 October 2008
Mark Jones	Committee Member	Appointed 1 October 2008
Roberta Lauchlan	Committee Member	Appointed 26 November 2008
Keren Miller	Committee Member	Appointed 1 October 2008
Fiona Place	Committee Member	Appointed 1 October 2008
Arahi Sont	Committee Member	Appointed 1 October 2008
Cr Andrew Petrie	Woollahra Council Representative	Appointed 1 October 2008
Cr Peter Cavanagh	Woollahra Council Representative	Appointed 1 October 2008

Principal Activities

The association was formed on 30 September 2008.

The principal activities of Holdsworth Family Services Inc during the financial period was the provision of family and community-based services in Woollahra area.

2. Other items

Significant Changes in State of Affairs

No significant changes in the association's state of affairs occurred during the financial period.

After balance day events

No matters or circumstances have arisen since the end of the financial period which significantly affected or may significantly affect the operations of the association, the results of those operations or the state of affairs of the association in future financial years.

Holdsworth Family Services Inc

ABN 30 326 902 708

Committee Report

For the Period Ended 30 June 2009

2. Other items continued

Auditors Independence Declaration

The lead auditors independence declaration for the period ended 30 June 2009 has been received and can be found on page 3 of the financial report.

3. Indemnifying Officers or Auditors

No indemnities

No indemnities have been given or insurance premiums paid, during or since the end of the financial period, for any person who is or has been an officer or auditor of Holdsworth Family Services Inc.

4. Director Information

Meetings of Directors

During the financial period, 7 meetings of directors (including committees of directors) were held. Attendances by each director during the period were as follows:

	Committee Members' Meetings	
	Eligible to attend	Number attended
Lyndell Droga	7	5
Claire Wivell Plater	7	6
Roanne McGinley Knox	7	5
Robyn Watts	7	5
Mark Jones	7	6
Roberta Lauchlan	6	6
Keren Miller	7	2
Fiona Place	7	7
Arahi Sont	7	5
Cr Andrew Petrie	7	6
Cr Peter Cavanagh	7	3

Signed in accordance with a resolution of the Member of the Committee:

Chairperson: 
Lyndell Droga

Treasurer: 
Roanne McGinley Knox

Dated 08/09/2009.

Holdsworth Family Services Inc

ABN 30 326 902 708

Auditors Independence Declaration under Section 307C of the Corporations Act 2001

I declare that, to the best of my knowledge and belief, during the period ended 30 June 2009 there have been:

- (i) no contraventions of the auditor independence requirements as set out in the Corporations Act 2001 in relation to the audit; and
- (ii) no contraventions of any applicable code of professional conduct in relation to the audit.

DFK Laurence Varnay
Chartered Accountants


Colin Grady
Partner

Sydney

8 September 2009



A member firm of DFK International a worldwide association of independent accounting firms and business advisers

Liability Limited by a scheme approved under Professional Standards Legislation

Level 7, 131 York Street
Sydney NSW 2000

POSTAL ADDRESS

PO Box Q819 QVB NSW 1230

TELEPHONE +61 2 9264 5400

FACSIMILE +61 2 9264 9294

EMAIL office@dfksydney.com

www.dfksydney.com

Holdsworth Family Services Inc

ABN 30 326 902 708

Income Statement

For the Period Ended 30 June 2009

		2009
	Note	\$
Revenue	2	41,894
Employee benefits expense		(4,576)
Other expenses		<u>(37,318)</u>
Profit attributable to members		<u><u>-</u></u>

The accompanying notes form part of these financial statements.

Holdsworth Family Services Inc

ABN 30 326 902 708

Balance Sheet

30 June 2009

	Note	2009 \$
ASSETS		
Current assets		
Cash and cash equivalents	3	<u>12,396</u>
Total current assets		<u>12,396</u>
TOTAL ASSETS		<u><u>12,396</u></u>
LIABILITIES		
Current liabilities		
Trade and other payables	4	<u>12,396</u>
Total current liabilities		<u>12,396</u>
TOTAL LIABILITIES		<u>12,396</u>
NET ASSETS		<u><u>-</u></u>
EQUITY		
TOTAL EQUITY		<u><u>-</u></u>

The accompanying notes form part of these financial statements.

Holdsworth Family Services Inc

ABN 30 326 902 708

Cash Flow Statement

For the Period Ended 30 June 2009

	Note	2009 \$
Cash from operating activities:		
Receipts from customers		41,894
Payments to suppliers and employees		<u>(29,498)</u>
Net cash provided by (used in) operating activities	5	<u>12,396</u>
Net increase (decreases) in cash held		12,396
Cash at beginning of financial year		<u>-</u>
Cash at end of financial year		<u><u>12,396</u></u>

The accompanying notes form part of these financial statements.

Holdsworth Family Services Inc

ABN 30 326 902 708

Notes to the Financial Statements

For the Period Ended 30 June 2009

1 Summary of Significant Accounting Policies

(a) General information

The financial report is a general purpose financial report that has been prepared in accordance with Australian Accounting Standards, Australian Accounting Interpretations, other authoritative pronouncements of the Australian Accounting Standards Board and the *Associations Incorporation Act 1984*.

Holdsworth Family Services Inc is a association, incorporated and domiciled in New South Wales, Australia.

This financial report covers Holdsworth Family Services Inc as an individual entity complies with all Australian equivalents to International Financial Reporting Standards (AIFRS).

The following is a summary of the material accounting policies adopted by the association in the preparation of the financial report. The accounting policies have been consistently applies, unless otherwise stated.

(b) Basis of preparation

The financial report has been prepared on an accruals basis and is based on historical costs modified, where applicable, by the measurement at fair value of selected non-current assets, financial assets and financial liabilities.

(c) Cash and cash equivalents

Cash and cash equivalents include cash on hand, deposits held at call with banks, other short-term highly liquid investments with original maturities of three months or less, and bank overdrafts. Bank overdrafts are shown within short-term borrowings in current liabilities on the balance sheet.

(d) Revenue

Other revenue is recognised when the right to receive the revenue has been established.

Interest revenue is recognised on a proportional basis taking into account the interest rates applicable to the financial assets.

Revenue from the rendering of services is recognised upon the delivery of service to the customers.

All revenue is stated net of the amount of goods and services tax (GST).

Holdsworth Family Services Inc

ABN 30 326 902 708

Notes to the Financial Statements

For the Period Ended 30 June 2009

1 Summary of Significant Accounting Policies continued

(e) Goods and Services Tax (GST)

Revenues, expenses and assets are recognised net of the amount of GST, except where the amount of GST incurred is not recoverable from the Tax Office. In these circumstances the GST is recognised as part of the cost of acquisition of the asset or as part of an item of the expense. Receivables and payables in the balance sheet are shown inclusive of GST. Cash flows are presented in the cash flow statement on a gross basis, except for the GST component of investing and financing activities, which are disclosed as operating cash flows.

(f) Income taxes

The association is a community service organisation and is endorsed for charity tax concession as follows:

- Income Tax Exemption under sub-division 50-B of the Income Tax Act 1997;
- FBT exemption under section 123C of the Fringe Benefits Tax Assessment Act;
- GST Concessions under Division 176 of a New Tax System (Goods and Services Tax) Act.

2 Revenue

	2009
	\$
Sales revenue	
- Fees-Clients	24,855
- Membership	2,994
- Grants	14,045
Total Revenue	<u>41,894</u>

3 Cash and cash equivalents

Cash at bank	<u>12,396</u>
	<u><u>12,396</u></u>

Reconciliation of Cash

Cash at the end of the financial year as shown in the cash flow statement is reconciled to items in the balance sheet as follows:

Cash and cash equivalents	<u>12,396</u>
	<u><u>12,396</u></u>

Holdsworth Family Services Inc

ABN 30 326 902 708

Notes to the Financial Statements

For the Period Ended 30 June 2009

4 Trade and other payables

2009

\$

CURRENT

Unsecured liabilities

Trade payables

12,028

Other payables

368

12,396

12,396

5 Cash Flow Information

(a) Reconciliation of Cash Flow from Operations with Profit after Income Tax

Net income/loss for the period

-

Changes in assets and liabilities

Increase/(decrease) in trade and
other payables

12,396

Cashflow from operations

12,396

6 Company Details

Registered office

The registered office of the association is:

Holdsworth Family Services Inc

64 Holdsworth Street

Woollahra

NSW 2025

Holdsworth Family Services Inc

ABN 30 326 902 708

Statement by Members of Committee

I, Lyndell Droga of 64 Holdsworth Street, Woollahra, NSW, and I, Roanne McGinley Knox of 64 Holdsworth Street, Woollahra, NSW, certify:

- (a) We are members of the committee of Holdsworth Family Services Inc.
- (b) We attended the annual general meeting of the association held on 24 September 2009.
- (c) We are authorised by the attached resolution of the committee to sign this certificate.
- (d) This annual statement was submitted to the members of the association at its annual general meeting.

Dated 08/09/2009.



Lyndell Droga



Roanne McGinley Knox

The accompanying notes form part of these financial statements.

Holdsworth Family Services Inc

ABN 30 326 902 708

Independent Audit Report to the members of Holdsworth Family Services Inc

Report on the Financial Report

We have audited the accompanying financial report of Holdsworth Family Services Inc, which comprises the balance sheet as at 30 June 2009, and the income statement, statement of changes in equity and cash flow statement for the year ended that date a summary of significant accounting policies, other explanatory notes and the statement by committee members.

The Responsibility of the Committee of Members for the Financial Report

The committee members of the association are responsible for the preparation and fair presentation of the financial report in accordance with Australian Accounting Standards (including the Australian Accounting Interpretations) and the financial reporting requirements of the company's constitution. This responsibility includes: designing, implementing and maintaining internal control relevant to the preparation and fair presentation of the financial report that is free from material misstatement, whether due to fraud or error; selecting and applying appropriate accounting policies; and making accounting estimates that are reasonable in the circumstances.

Auditor's Responsibility

Our responsibility is to express an opinion on the financial report based on our audit. We conducted our audit in accordance with Australian Auditing Standards. These Auditing Standards require that we comply with relevant ethical requirements relating to audit engagements and plan and perform the audit to obtain reasonable assurance whether the financial report is free from material misstatement.

An audit involves performing procedures to obtain audit evidence about the amounts and disclosures in the financial report. The procedures selected depend on the auditor's judgement, including the assessment of the risks of material misstatement of the financial report, whether due to fraud or error. In making those risk assessments, the auditor considers internal control relevant to the association's preparation and fair presentation of the financial report in order to design audit procedures that are appropriate in the circumstances, but not for the purpose of expressing an opinion on the effectiveness of the entity's internal control. An audit also includes evaluating the appropriateness of accounting policies used and the reasonableness of accounting estimates made by the committee members, as well as evaluating the overall presentation of the financial report.

We believe that the audit evidence we have obtained is sufficient and appropriate to provide a basis for our audit opinion.

Holdsworth Family Services Inc

ABN 30 326 902 708

Independent Audit Report to the members of Holdsworth Family Services Inc

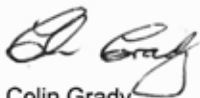
Independence

In conducting our audit, we have complied with the independence requirements of the Australian professional ethical pronouncements.

Auditor's Opinion

In our opinion, the financial report presents fairly, in all material respects, the financial position of Holdsworth Family Services Inc as of 30 June 2009 and of its financial performance and its cash flows for the year then ended in accordance with Australian Accounting Standards (including the Australian Accounting Interpretations)

DFK Laurence Varnay
Chartered Accountants



Colin Grady
Partner

Sydney

8th September 2009



A member firm of DFK International a worldwide association of independent accounting firms and business advisers

Liability Limited by a scheme approved under Professional Standards Legislation

Level 7, 131 York Street
Sydney NSW 2000

POSTAL ADDRESS

PO Box Q819 QVB NSW 1230

TELEPHONE +61 2 9264 5400

FACSIMILE +61 2 9264 9294

EMAIL office@dfksydney.com

www.dfksydney.com

Holdsworth Family Services Inc

ABN 30 326 902 708

ABN 30 326 902 708

Disclaimer

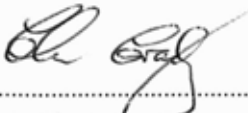
For the Period Ended 30 June 2009

The additional financial data presented on 14 is in accordance with the books and records of the association which have been subjected to the auditing procedures applied in our statutory audit of the association for the year ended 30 June 2009. It will be appreciated that our statutory audit did not cover all details of the additional financial data. Accordingly, we do not express an opinion on such financial data and we give no warranty of accuracy or reliability in respect of the data provided. Neither the firm nor any member or employee of the firm undertakes responsibility in any way whatsoever to any person (other than Holdsworth Family Services Inc) in respect of such data, including any errors of omissions therein however caused.

DFK Laurence Varnay
Chartered Accountants

Sydney

5th September 2009


.....
Colin Grady, Partner

Holdsworth Family Services Inc

ABN 30 326 902 708

ABN 30 326 902 708

Profit and Loss Account

For the Period Ended 30 June 2009

	2009
	\$
Income	
Fees	27,849
Grants	14,045
Total income	<u>41,894</u>
Less: Expenses	
Advertising	250
Bank charges	60
Cleaning	3,596
Program activity and resources	1,753
Salaries	3,732
Service charges	31,659
Staff training	500
Superannuation contributions	234
Workers compensation insurance	110
Total Expenses	<u>(41,894)</u>
Profit before income tax	<u><u>-</u></u>

www.holdsworth.org.au

